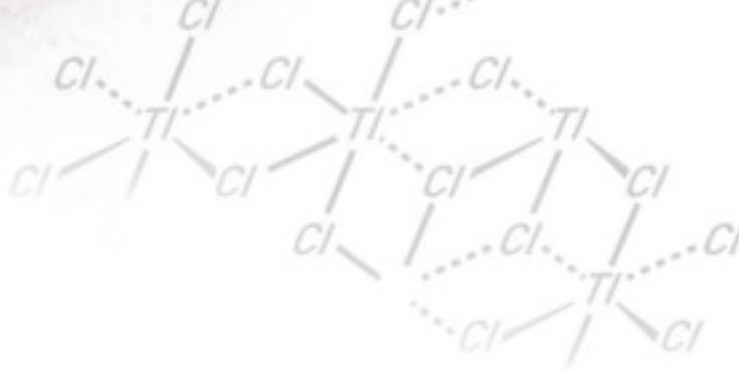



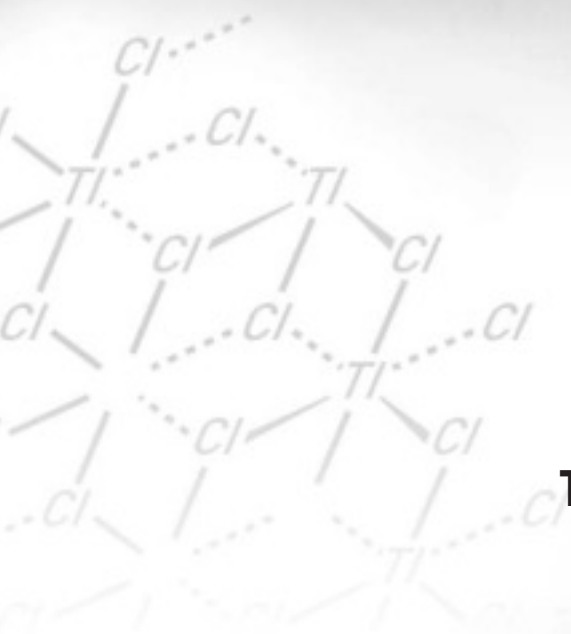
TUFF PATCH™

CONCRETE REPAIR KITS



Thermal-Chem offers one of the industry's most complete patch kit lines for restoring and protecting concrete surfaces.

- Restore and prevent erosion & damage
- Protect against material handling vehicle abuse
- Eliminate floor safety hazards
- Create easier to clean concrete surfaces



thermal-chem®
The Next Generation in Concrete Patching

TUFFPATCH™ KITS

FIVE FORMULAS TO MEET YOUR SPECIFIC NEEDS

MP 600 - Multi Purpose

DESCRIPTION

The **TuffPatch™ MP** kit is a pre-proportioned three (3) component 100% solids, non-shrink epoxy polymer patch kit designed for multi-purposes. This product is a proven performer that provides excellent impact and abrasion resistance along with good chemical resistance for most heavy duty applications.

TuffPatch™ MP may be applied on dry or moist surfaces at temperatures down to 40° F and is ideal for interior and exterior applications.

USES:

Truck loading docks
Manufacturing areas
General industrial

ADVANTAGES:

13,000 PSI compressive strength
Good chemical resistance
High abrasion resistance
Low odor
No V.O.C.'s
Meets USDA guidelines
No patching minimum or maximum depth limitations
Non-flammable

VS 602 - Vertical Surface

DESCRIPTION

TuffPatch™ VS is a pre-proportioned three (3) component 100% solids, non-shrink epoxy polymer patch kit designed for *vertical and overhead surfaces*.

TuffPatch™ VS is identical to **TuffPatch™ MP** but in a light gel consistency. With the addition of properly blended aggregate, **TuffPatch™ VS** is ideal for exterior and interior vertical and overhead patching applications.

USES:

Fill surface cracks
Patching on walls, curbs, & ceilings

ADVANTAGES:

Long pot life for extra working time
Low odor
12,500 PSI compressive strength
No V.O.C.'s
Vertical and overhead patching will “hang” at 1/2” to 1” per lift when mixed with the proper aggregate
Non-flammable

FP 604 - Food Processing

DESCRIPTION

The **TuffPatch™ FP** is a three (3) component, polyurethane system for use in USDA inspected food processing facilities. Its chemical composition of water emulsified polyurethane combined with cement and silica sand produce properties that exceed those of concrete while delivering the ultimate resistance to thermal shock and the ability to withstand high temperatures up to 230° F.

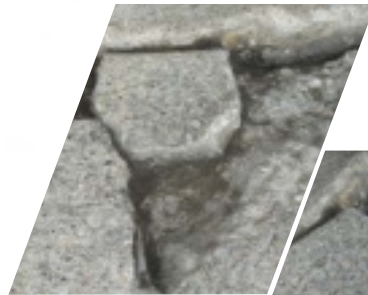
USES:

Food processing
Commercial kitchens
Food and beverage plants
Meat and poultry processing plants
General industrial
Restroom and concession areas

ADVANTAGES:

High thermal shock resistance
High impact resistance
Resistance against chemical attack & abrasion
Four hour cure time
Meets USDA guidelines
No solvents or offensive odors
May be installed on moist substrates
No V.O.C.'s

4 STEP PATCHING PROCESS



SURFACE PREP



PRIME



MIX



PATCH

UF 606 - Ultra Fast

DESCRIPTION

TuffPatch™ UF is a two (2) component, 70% solids, *very fast setting*, ultra low viscosity, and high strength urethane/polyurea concrete repair material. **TuffPatch™ UF** is formulated to use in combination with clean dry sand for quick turn-around repairs on spalled and deteriorated concrete. Its quick build of compressive strength permits heavy forklift traffic in just minutes after placement. The product's low viscosity (24 cps) allows penetration into hairline cracks resulting in excellent adhesion to concrete.

USES:

Repair holes, spalls, and non-moving cracks
Rebuild damaged control joints
When quick turn-around time is required

ADVANTAGES:

Can be applied down to 20° F.
Supports heavy traffic loads in 20 minutes
Quick turn-around service time
Self-priming on virtually all concrete substrates
Meets USDA requirements

CR 608 - Chemical Resistant

DESCRIPTION

TuffPatch™ CR is a chemical resistant three (3) component, 100% solids reactive novalac type epoxy formulation that has excellent resistance to a wide range of dry and liquid chemicals including exposures in many submersible applications.

TuffPatch™ CR provides the ultimate protection from aggressive chemicals on interior as well as exterior applications and can be applied on dry or moist substrates at temperatures down to 45° F.

USES:

Battery charging areas
Hazmat facilities
Chemical processing plants
Primary and secondary containment
Chemical storage areas

ADVANTAGES:

Provides a chemically resistant surface
No V.O.C.'s
Can be applied over wet or moist surfaces
No minimum patch depth requirements
Suitable for exterior or interior applications
Meets USDA requirements

PRODUCT LINE FEATURES:

- Easy to use pre-measured kits
- VOC compliant formulas
- Broad product selection
- Superior compressive strength
- Excellent abrasion resistance
- Rapid cure and low temperature formulas
- Interior or exterior use
- High chemical resistance

PACKAGING:

All TuffPatch™ Kits are packaged in convenient "Pre-Proportioned" 5-gallon pails that include:

- Complete set of instructions
- Epoxy resin parts "A" and "B"
- Appropriate aggregate

AVAILABLE COLORS:

Tile Red, Medium Gray, and Straw (clear)

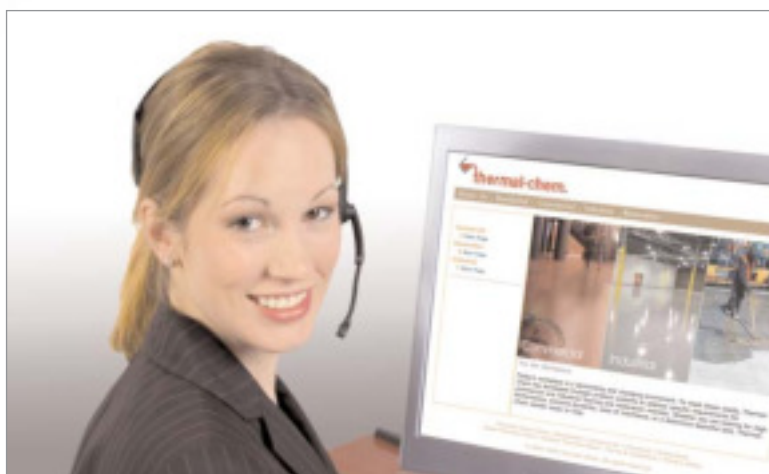
PRODUCT PERFORMANCE CHARACTERISTICS

	Pot Life @ 72°	Cure Time @ 72°	Compressive Strength	Coverage
MP-600 Multi Purpose	30 min	2 hrs	13,000 psi	18 sq. ft. at 1/4 inch
VS-602 Vertical Surface	30 min	2 hrs	12,500 psi	17 sq. ft. at 1/4 inch
FP-604 Food Processing	25 min	3 hrs	6,900 psi	14 sq. ft. at 1/4 inch
UF-606 Ultra Fast	3-5 min	15 min	4,800 psi	11 sq. ft. at 1/4 inch
CR-608 Chemical Resistant	75 min	4.5 hrs	8,000 psi	18 sq. ft. at 1/4 inch

FOR DETAILS OR SPECIFIC RECOMMENDATIONS, CONTACT :



THE NEXT GENERATION IN CONCRETE PATCHING



A manufacturer since 1976, Thermal-Chem has specialized in high performance polymer flooring and restoration systems that protect, preserve, and beautify concrete surfaces. Serving the Residential, Commercial, and Industrial markets for over 30 years, Thermal-Chem stands ready to meet your concrete coating needs.



thermal-chem[®]
www.thermalchem.com
800.635.3773
Franklin Park, IL